

94092

MARGO

LED

General Information

Article: 94092
 Lighting Type: recessed luminaire
 EAN Code: 9002759940928

Dimensions

Height: 10 mm
 Ø: 84 mm
 Installation Depth: 125 mm
 Cutout: 78 mm
 Weight: 0.366 kg

Illuminant

Socket: GU10
 Illuminant: GU10-LED
 Delivery: incl.
 Wattage: 1x 5W
 Luminous Flux: 1x 400 lm
 Luminous Colour: 3000K warm white
 Average Lifetime: 15,000 h
 Colour Rendering Index: >80 Ra
 Energy Efficiency: A+
 Suitable for: A++ - E
 kWh/1000: 5.00
 Info on Dimmer: [more Information](#)
 Info on Recycling: [more Information](#)

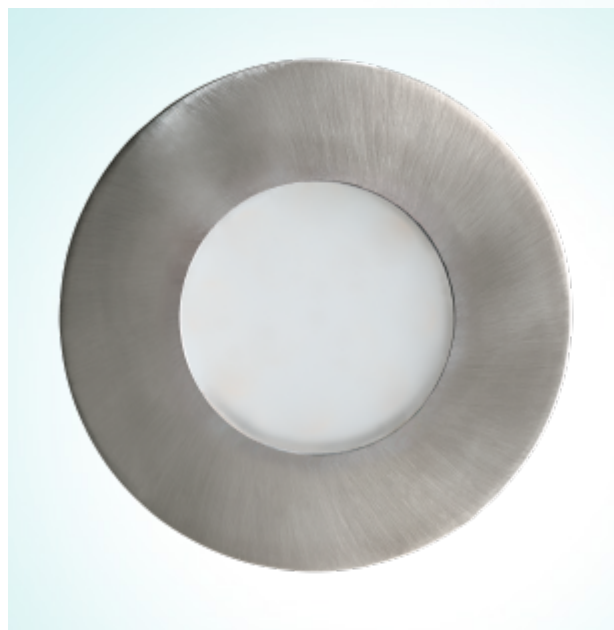
Detailed Information

Material & Colour

Enclosure Material: cast aluminium
 Enclosure Colour: stainless steel
 Glass / Shade Material: satinated glass
 Glass / Shade Colour: white

Technical Information

Protection Rating: 6520
 Protection Class: 2
 Line Voltage: 220-240V,50/60Hz
 Operation Voltage: 220-240V,50/60Hz



Technical changes reserved